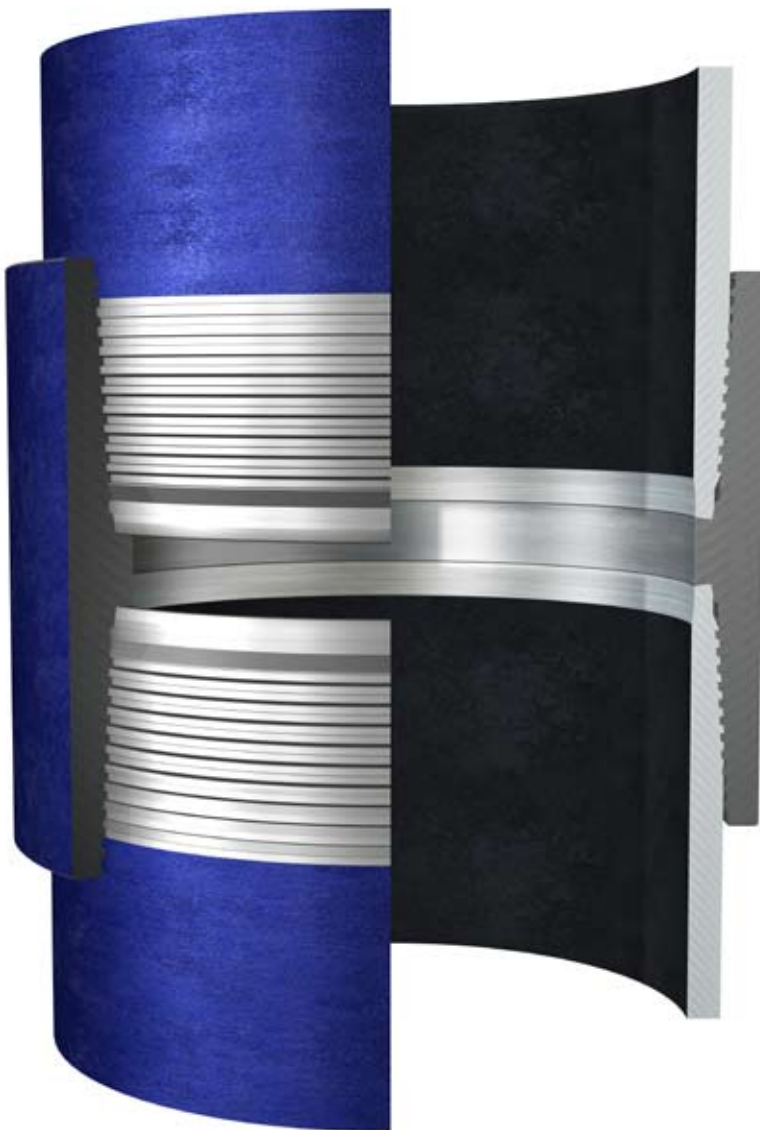


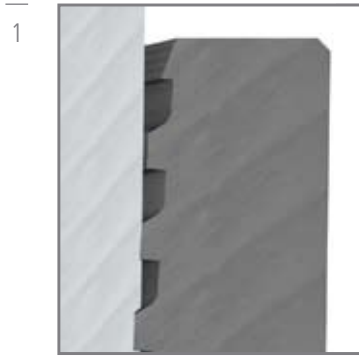
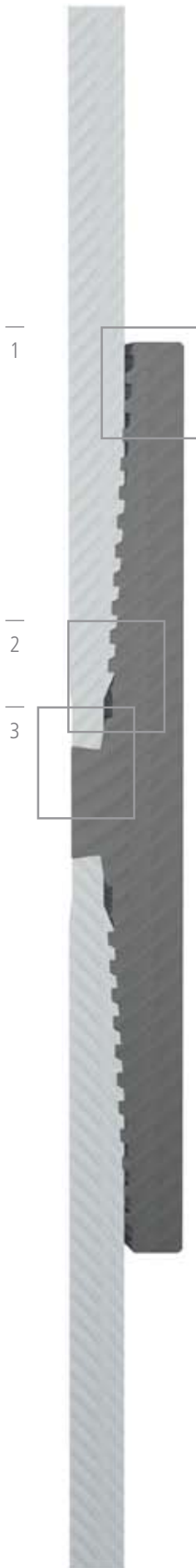
# Introducing the TenarisHydril Blue® Quick Seal connection | 16" TO 22"



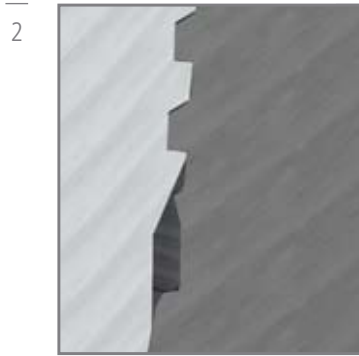
The Blue® Quick Seal connection has been designed for large OD surface casing that requires a gas-tight seal and fast make-up. This threaded and coupled connection features a metal-to-metal seal with a sphere-to-cone geometry, providing stable sealing performance under combined loads, to face potential shallow gas. It has been successfully tested in accordance with customer requirements following the guidelines of the forthcoming revision of the API RP 5C5 with test series at ambient and elevated temperature.

The Blue® Quick Seal connection's design is based on that of the well established Blue® connection, whose sealing design has been specially adapted for use on large OD pipe.

The connection comes with our Dopeless® technology, which enhances its performance and reliability and provides additional operational, well productivity and HSE benefits.



- Easier and faster make-up provided by the twin start thread.



- Dope pocket accommodates excess of thread compound for efficient and reliable make-up.



- Internal seal with toroidal design for stable sealing performance under high combined loads.

#### MAIN FEATURES

- Designed for large OD surface casing that requires a gas-tight seal.
- Tested in line with the forthcoming revision of the API RP 5C5 with test series at ambient and elevated temperature.
- 100% pipe body gas-tightness performance in terms of internal and external pressures under combined loads.
- 100% pipe body structural performance.

#### MAIN APPLICATION

- Surface casing

For further information please contact  
[premiumconnections@tenaris.com](mailto:premiumconnections@tenaris.com)